

## IR24-24G

### 24" Griddle Restaurant Range

---

The Inferno 24" griddle-top range is strong and durable, perfect for busy commercial kitchens. Units can be specified in natural gas or liquid propane. Ranges come with thick polished steel griddle plates, and ovens come standard with 2 chrome racks. Even as the smallest of our ranges, this unit will still accommodate 18" x 26" sheet pans.

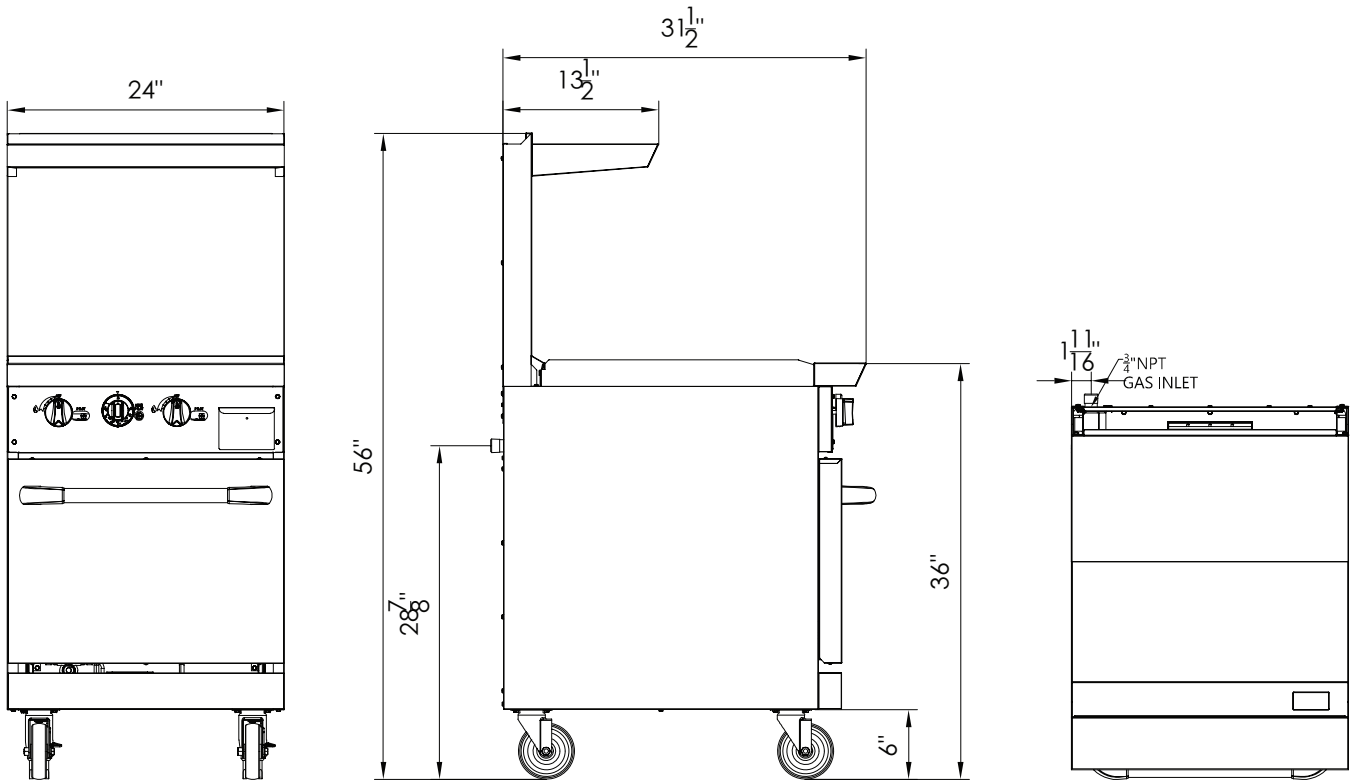


### Features

- 26,000 BTU/hr griddle plate
- 3/4" thick polished steel griddle plate
- 30,000 BTU/hr oven
- Oven temperatures from 175°F to 500°F
- 2 chrome racks included
- 5" casters with locks on front
- Fits 18" x 26" sheet pans
- Porcelain oven interior for easy cleaning
- Units available in natural gas or liquid propane
- 1 year parts and labour warranty

**IR24-24G**

**24" Griddle Restaurant Range**



**FRONT**

**LEFT**

**TOP**

| Model    | External Dimensions (inches) |        |    | Crated Dimensions (inches) |        |        | Net Weight | Gross Weight | Gas Source | Burner Count | Single Burner | Total Output (BTU) | Orifice Size | Gas Pressure |           |
|----------|------------------------------|--------|----|----------------------------|--------|--------|------------|--------------|------------|--------------|---------------|--------------------|--------------|--------------|-----------|
|          | W                            | D      | H  | W                          | D      | H      |            |              |            |              |               |                    |              |              |           |
| IR24-24G | 24                           | 31 1/2 | 56 | 26                         | 36 4/5 | 38 1/4 | 304.70     | 370.70       | LPG        | Griddle      | 2             | 26000              | 82000        | 53           | 10 in. WC |
|          |                              |        |    |                            |        |        |            |              |            | Oven         | 1             | 30000              |              | 52           |           |
|          |                              |        |    |                            |        |        |            |              | NAT        | Griddle      | 2             | 26000              |              | 43           | 5 in. WC  |
|          |                              |        |    |                            |        |        |            |              |            | Oven         | 1             | 30000              |              | 40           |           |

Specifications are subject to change without notice.